

Minor Surgery and Non Obstetric Ultrasound Scan Service (NOUS) Listening Exercise



SWB CCG

- **Who Are We?**
- **Our Purpose?**
- **Our Population**

NHS 10 Year Plan

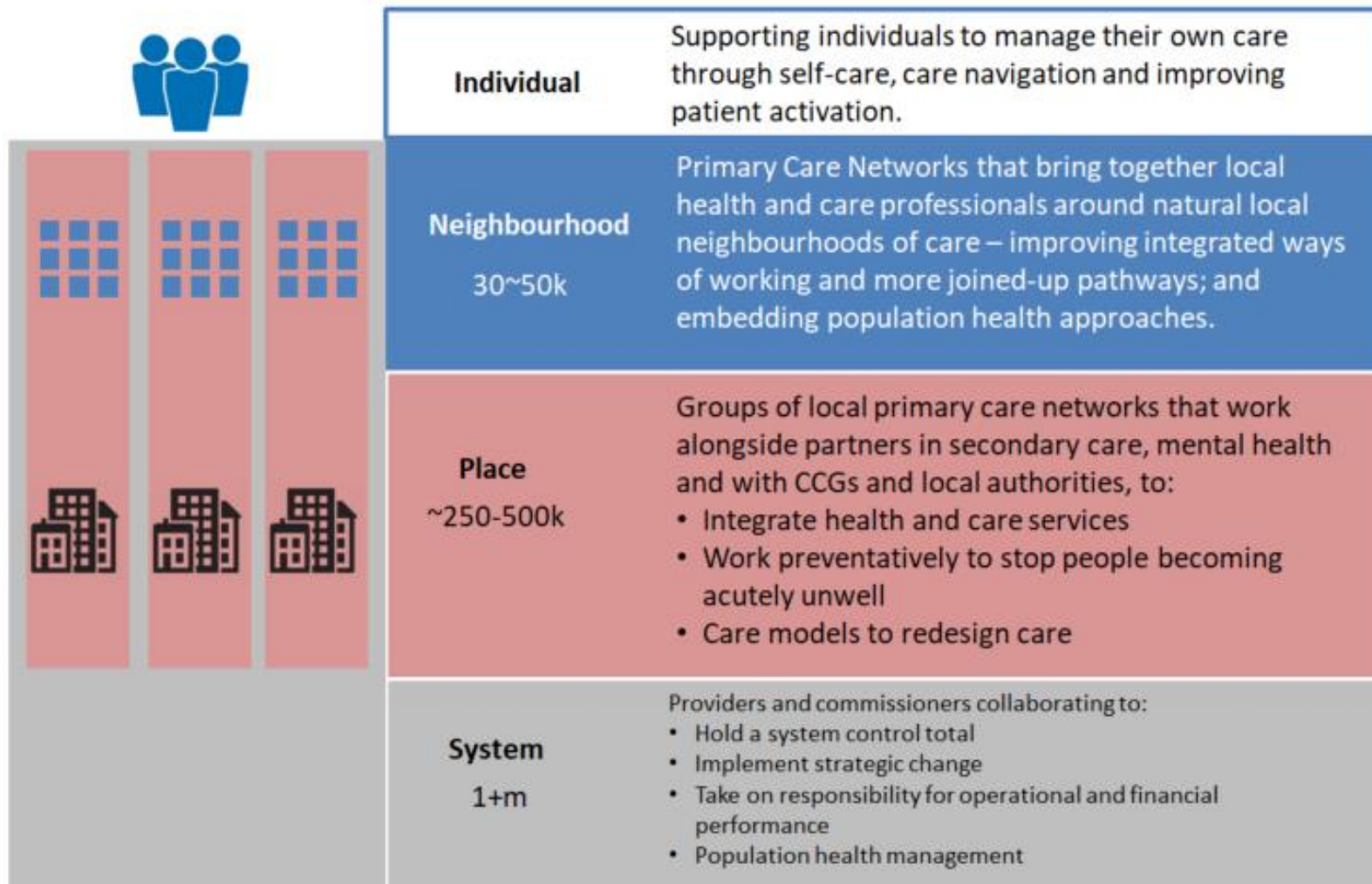
NHS Long Term Plan

#NHSLongTermPlan

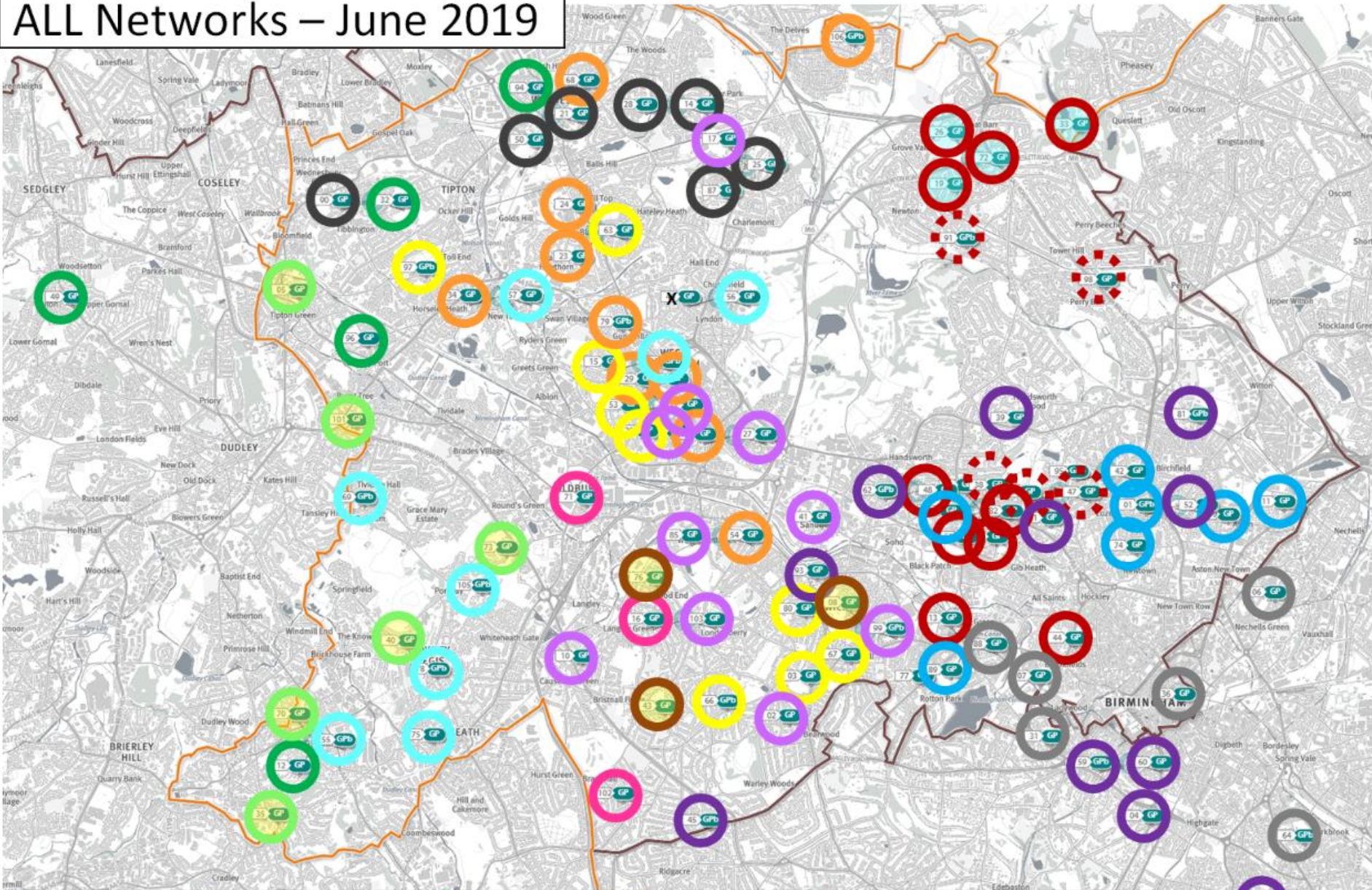
Primary Care Network (PCN) Boundaries

- National requirements
- List Size
- Boundary

Primary Care in an ICS



ALL Networks – June 2019



- | | | | | |
|-------------------|------------------|-------------------|----------------|----------------------|
| Central | Citrus | I3 | MODALITY | Newcomen |
| Oldbury & Langley | Pioneers Central | Pioneers Sandwell | Pioneers South | Primary Care Doctors |
| Synergy | Together4Health | United | Urban Health | YHP |

Minor Surgery



Minor Surgery

- **What is Minor Surgery?**
- **What are the Current Arrangements for Minor Surgery?**
- **What do the Changes Mean for Our Patients?**

Non Obstetric Ultrasound Scan (NOUS)



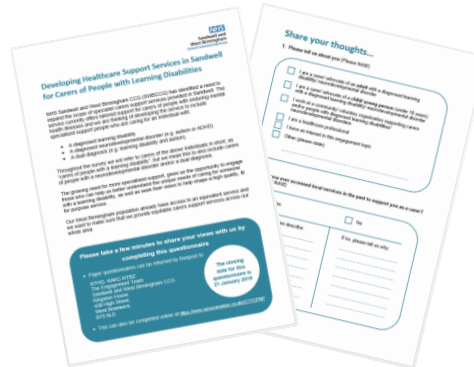
NOUS

- **What is NOUS?**
- **What are the Current Arrangements for NOUS?**
- **What do the Changes Mean for Our Patients?**

Our Responsibilities To Our Patients

The Health and Social Care Act 2012 dictates the NHS has a duty to involve people in decisions about their health care and to consult and involve people when planning or changing commissioned health services.

Our Engagement Approach



Our Public Meetings

- **Tuesday 4th June 2019, 2.00-5.00pm**

Handsworth Fire Station, Rookery Rd, Birmingham, B21 9QU

- **Tuesday 25th June 2019, 2.00-5.00pm**

Portway Lifestyle Centre, Newbury Lane, Oldbury, B69 1HE

- **Thursday 27th June 2019, 6.00-9.00pm**

YMCA 38 Carter's Green, West Bromwich, B70 9LG

Further Details

- Complete our online surveys:
- For NOUS

<https://www.surveymonkey.co.uk/r/SWBNOUS>

- For Minor Surgery

<https://www.surveymonkey.co.uk/r/SWBMinorSurgery>

- For more information contact our Engagement Team on 0121 612 1447 or email swbccg.engagement@nhs.net

Next Steps

- Report presentation to Strategic Commissioning and Redesign Committee (SCR) for
 - Minor Surgery
 - NOUS
- Report availability
<https://sandwellandwestbhamccg.nhs.uk/public-engagement>

Question and Answers

